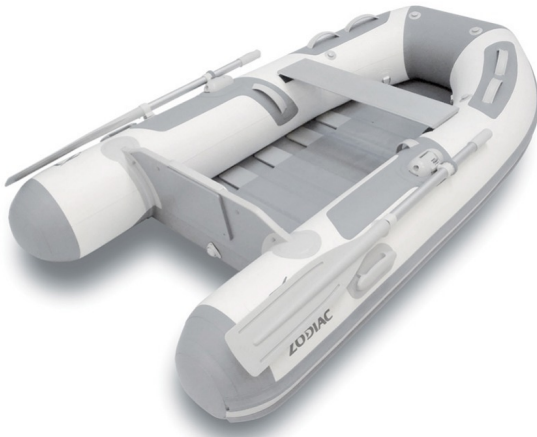




PRICES VAT included

Cadet 200 Aero



THE MARKET REFERENCE

Its superiority is due to the use of higher quality materials and the tubes assembly welding, which ensure optimal resistance and durability. In its rich and high quality equipment, you will find some of the Zodiac Nautic patented units such as the rowlock with its three-dimensional adjustment or the dump with inner control, more comfortable and safe to use. Available in 3 floor options (depending on the size), to be selected depending on the available storage capacity on your unit

TECHNICAL FEATURES

OVERALL LENGTH	2 m	NUMBER OF WATERTIGHT COMPARTMENTS	2+1
INSIDE LENGTH	1,26 m	SHAFT	Court
OVERALL WIDTH	1,34 m	MAXIMUM AUTHORIZED POWER (HP)	3
INSIDE BEAM	0,62 m	MAXIMUM AUTHORIZED ENGINE WEIGHT (2X)	18 kg
TUBE DIAMETER	0,36 m	BAG LENGTH	0,97 m
WEIGHT	20 kg	BAG WIDTH	0,42 m
NUMBER OF PASSENGERS (CATEGORY C)	2	BAG HEIGHT	0,28 m
MAXIMUM AUTHORIZED LOAD (CATEGORY C)	210 kg		

VERSIONS

Z11010 Cadet 200 Aero white/grey

0 DKK



PRICES VAT included

Cadet 200 Aero



STANDARD EQUIPEMENT

HULL & DECK: 2 lifting eyes, 2 Towing rings, Internally-operated bailer.
COMFORT: Removable swimming platform in aluminum.
Tube: 1 bow handle, 2 carrying handles.

Reinforcements of cones.

OTHER: Aluminum oars, Inflator, Repair kit / owner's manual, Tank belt , Transport bag.

OPTIONS & ACCESSORIES

COMFORT					
Z61087	Side rigid boarding ladder	0 DKK			
FISHING & LEISURE					
Z1186	Fishing rod holder	0 DKK			
HULL & DECK					
Z1229	Lifting sling kit/towing bridle	0 DKK			
OTHER					
Z1423	12volt 240mb Inflator with pressure controller	0 DKK			
			Z60801	12volt 800 mb Inflator with 450L/min pressure controller	0 DKK
			Z1253	bow storage bag	0 DKK
			Need to order the reference Z2816 in addition to the Cadet RIB260 [Z11451/Z11452] and Cadet RIB290 [Z11461, Z11453, Z11452]		
			Z1236	Davit-launched sling kit	0 DKK
			Z61161	Launching wheels	0 DKK
			Z1084	Maneuver roller 2.10 X 0.24	0 DKK
			Z670 61	Pressure gauge	0 DKK
			Z61545	Under bench storage bag	0 DKK