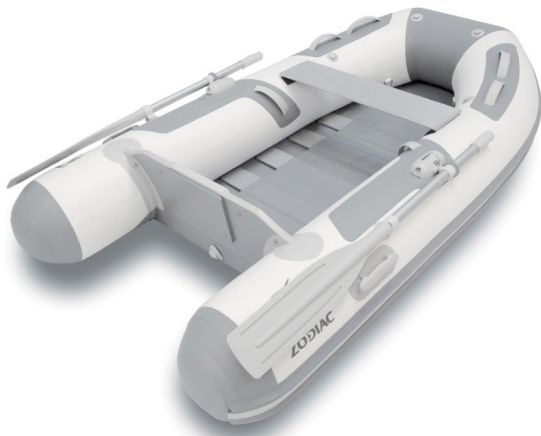




**PRICES VAT included**

# Cadet 310 Alu



## THE MARKET REFERENCE

Its superiority is due to the use of higher quality materials and the tubes assembly welding, which ensure optimal resistance and durability. In its rich and high quality equipment, you will find some of the Zodiac Nautic patented units such as the rowlock with its three-dimensional adjustment or the dump with inner control, more comfortable and safe to use. Available in 3 floor options (depending on the size), to be selected depending on the available storage capacity on your unit

### TECHNICAL FEATURES

|                                      |        |                                       |        |
|--------------------------------------|--------|---------------------------------------|--------|
| OVERALL LENGTH                       | 3,10 m | NUMBER OF WATERTIGHT COMPARTMENTS     | 3+1    |
| INSIDE LENGTH                        | 2,20 m | SHAFT                                 | Court  |
| OVERALL WIDTH                        | 1,55 m | MAXIMUM AUTHORIZED POWER (HP)         | 15     |
| INSIDE BEAM                          | 0,68 m | MAXIMUM AUTHORIZED ENGINE WEIGHT (2X) | 55 kg  |
| TUBE DIAMETER                        | 0,44 m | BAG LENGTH                            | 1,50 m |
| WEIGHT                               | 49 kg  | BAG WIDTH                             | 0,63 m |
| NUMBER OF PASSENGERS (CATEGORY C)    | 5      | BAG HEIGHT                            | 0,35 m |
| MAXIMUM AUTHORIZED LOAD (CATEGORY C) | 600 kg |                                       |        |

### VERSIONS

**Z11017** Cadet 310 Alu white/grey

**0 DKK**



PRICES VAT included

Cadet 310 Alu



**STANDARD EQUIPEMENT**

**HULL & DECK:** 2 lifting eyes, 2 Towing rings, Internally-operated bailer.  
**COMFORT:** Removable thwart in aluminum (dual position).  
**Tube:** 1 bow handle.

2 carrying handles, Reinforcements of cones.

**OTHER:** Aluminum oars, Inflator, Repair kit / owner's manual, Transport bag.

**OPTIONS & ACCESSORIES**

|                              |  |       |   |  |       |
|------------------------------|--|-------|---|--|-------|
| <b>COMFORT</b>               |  |       |   |  |       |
| Z61087                       | Side rigid boarding ladder                     | 0 DKK |   |  |       |
| <b>FISHING &amp; LEISURE</b> |  |       |   |  |       |
| Z1186                        | Fishing rod holder                             | 0 DKK |   |  |       |
| <b>SEATS</b>                 |  |       |   |  |       |
| Z69417                       | 2nd bench                                      | 0 DKK |   |  |       |
| Z1180                        | Duffle seat L - 0.70m - grey                   | 0 DKK |   |  |       |
| <b>HULL &amp; DECK</b>       |  |       |   |  |       |
| Z1229                        | Lifting sling kit/towing bridle                | 0 DKK |   |  |       |
| <b>OTHER</b>                 |  |       |   |  |       |
| Z1423                        | 12volt 240mb Inflator with pressure controller | 0 DKK |   |  |       |
|                              |  |       | Z60801  | 12volt 800 mb Inflator with 450L/min pressure controller | 0 DKK |
|                              |  |       | Z1253   | bow storage bag  | 0 DKK |
|                              |  |       | Need to order the reference Z2816 in addition to the Cadet RIB260 [Z11451/Z11452] and Cadet RIB290 [Z11461, Z11453, Z11452] |  |       |
|                              |  |       | Z1236   | Davit-launched sling kit                                 | 0 DKK |
|                              |  |       | Z61161  | Launching wheels   | 0 DKK |
|                              |  |       | Z1084   | Maneuver roller 2.10 X 0.24                              | 0 DKK |
|                              |  |       | Z670 61   | Pressure gauge   | 0 DKK |
|                              |  |       | Z61545  | Under bench storage bag                                  | 0 DKK |