



Uni-Safe A/S

Sea and Aeronautical Safety

Uni-Safe covers all aspects of safety at sea - both commercial traffic at sea as for recreational sailors.

It is not only professionally and longstanding seamanship - but also good business sense behind the company in marine safety - Uni-Safe.

Uni-Safe has a position as the leading supplier of life saving appliances and rubber boats to both professional and military users as to yachtsmen:

- MOB - Man overboard Boat
- Work- and Boarding Boat
- FRC - Fast Rescue Boat
- Inflatable- and RIB boat
- Lifeboat
- Liferaft
- MES systems
- Lifebuoys
- Rescue net
- Scramble net
- Lifejackets
- Pyrotechnical products
- Parachute Rockets, Hand flares, Line throwing devices, Light- & Smoke signals etc.
- Personal protective equipment
- Outboard engines

Uni-Safe Servicecenters

Service may be the crucial and vital difference, especially when it comes to marine safety equipment. At our workshops, repairs and inspections are in the hands of qualified personnel.

We offer a professional service of inflatable life jackets, rescue suits, liferaft and marine evacuation systems (Marine Escape System).

We cater primarily to professionals such as military, governmental institutions, offshore operators and related professional companies, but private persons and yachts are also among our customer references.

Security has a high priority, and we focus on the service dates are respected and that inspections and repairs are carried out with care and under controlled and approved conditions.

Service workshops are selected and approved by our subcontractors and approved and certified by the Maritime Authority. All maintenance work is carried out according to legislation on health-environmental- and working conditions for our employees.

In addition to the department in Copenhagen, we have similar workshop in Frederikshavn.

- Service Workshop for inflatable boats
- Service Workshop for RIBs
- Service Workshop for liferaft
- Service Workshop for inflatable lifejackets
- Service Workshop on rescue-/immersion suits



Johnny Stengaard Meyer
Managing director

TABLE OF CONTENTS

LIFE SAVING EQUIPMENT

- PYROTECHNICS
- MARINE SAFETY:
 - LIFEBOUYS
 - LIFEBOUY HOUSING
 - LIFEBOUY ACCESSORY
- JASONS CRADLE / RESCUE NET
- LIFEJACKETS
 - INFLATABLE LIFEJACKETS
 - SPAREPARTS FOR INFLATABLE LIFEJACKETS
 - INHERENT LIFEJACKETS
- ELECTRONICS
 - PLB – PERSONAL LOCATOR BEACON
 - AIS – AUTOMATIC IDENTIFICATION SYSTEM
- SURVIVAL SUITS
- TRANSPORT-/SPECIAL SUITS
- FLOATATION SUITS
- LIFERAFT/MES
 - THROW OVER LIFERAFTS
 - DAVIT LAUNCHED LIFERAFTS
 - EXTENDED PACKING SERVICE LIFERAFTS
 - STACKABLE LIFERAFTS
 - MES SYSTEMS
- MOB BOATS
- FRB BOATS
- OUTBOARDS / SOLAS APPROVED
- INFLATABLE WORK BOATS
- INFLATABLE MILITARY BOATS
- RIBS, ZODIAC
- RIBS, ZODIAC HURRICANE
- SERVICECENTER
 - SERVICE LIFEJACKETS
 - SERVICE IMMERSION-/SURVIVAL SUITS
 - SERVICE INFLATABLES- & RIBs
- UNI-SAFE SERVICECENTERS
- NOTES



916040006	Comet Line Throwing devices Establishing of line connections in sea distress cases or across obstacles in overhead line-, ropeway- and bridge constructions.		
916270006	Replacement rocket for line throwing device		
916160006	Comet MOB Light-Smoke signal Position marking of a lifebuoy. Safe on oil and petrol water.		
916310006	Comet Parachute Signal Rocket, red Hand-held signal, firing in emergency. Day or night signal. Release on red star of 40 seconds burning time and 30,000 candelas.		
912370006	Comet Parachute Signal Rocket, white A day or night collision warning signal, or used at night to illuminate areas for search and rescue operations		

916280006

Comet Handflare, red

Hand-held signal, firing in emergency. Short range distress signal used to pinpoint position. 60 seconds burning time and 15,000 candela.



916200006

Comet Smoke Signal, 3 min. Orange

Signal for position marking during rescue operations. Emergency signal for daylight use. Safe on oil and petrol covered water.


Watertight container

Container for the safe and dry storage of various pyrotechnics in marine environment like lifeboats or MOB boats. Many sizes and also Anti-Static version.



1* 912700006
12* 916310006

Comet Bridge signal set

12 Red Parachute Rockets in a tough waterproof Comet container. Designed to meet the SOLAS/MED/USCG regulation, which requires 12 Red Parachute Rockets to be kept on a ships' bridge, this kit is conveniently stowed in our large waterproof plastic container.



919460006

Version w/3 cartridges
919470006

Comet Personal Signal Launcher

Contains 9 red aerial flare cartridges and a firing mechanism, all enclosed in a tough, water-resistant case. The penjector is fitted with a stainless-steel spring and striker pin. It features a slot for easy loading and unloading of the flare cartridge with the trigger in the safety catch position.



LIFEBUOY

Lifebuoys are used both at sea and on land. The standard buoy is 2½ kg and will support two people in the water. The 4kg lifebuoy is mainly used on ships as it is the weight of lifebuoy required to pull the man-overboard smoke and light unit from its bracket.

100505 2½ kg
101805 4 kg



LIFEBUOY BRACKET

Galvanised steel bracket for lifebuoy

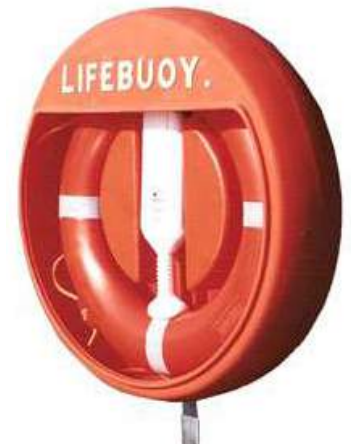
601105



LIFEBUOY HOUSING

Lifebuoy housing, orange polyethylene, Ø850mm. W/O lifebuoy and line

8105



LIFEBUOY FLOATING LINE

Floating line 30 m.

628605

Floating line 25 m.
Fits the inner circle of lifebuoy.

150502

Floating line 30 m.
Fits the inner circle of lifebuoy.

150602



120506

LIFEBUOY LIGHT

The L90 uses five alkaline batteries, offering a life of one year. Robust and reliable, the L90 is automatically activated after release.



120606

Bracket to be ordered separately.



4505

LIFEBUOY LIGHT (ATEX)

L161 are approved by ATEX and IECEx and are ETL listed under UL913 which means it is Intrinsically Safe (category 1) and can be used in hazardous zones 0, 1 and 2.



10005

LIFEBUOY LIGHT

Uni-Safe BL-2H-ALK The light is completely sealed and tamper free.

The battery inside is an alkaline type, that requires no further service.

On the label is clearly indicated manufacturing date and expiry date and it has a 5 year storage time.



1114201

SECUMAR 17 MOB package

MOB pack with foam lifebuoy with 3M®-retroreflective strips, signal whistle, buoyant rescue line (30 m) all stored in a practical lid.



Hand lamp (rechargeable)

Halogen handheld lamp for rescue boats. Excellent halogen beam with up to 100,000 candle power using superb long life bulbs (300 to 500 hours). Rechargeable with 12V and 230V. Charger kit included.

13818



TPA – Thermal Protective Aid

Thermal Protective Aid for lifeboat and liferaft. Packed in vacuum bag. The design is outstanding; all seams are welded and 100% water-tight, the inside layer is metalized to retain body heat, and web reinforcement allows unconscious survivors to be carried while in the TPA. It has a long zip for easy donning and will accommodate a mother and small child.

101106



TPA – Thermal Protective Aid

Thermal Protective blanket for emergency use.

152818



Signal mirror – Air Force Type

Signal Mirror developed for the US Air Force for use by downed pilots and their crew. The Air Force Type Signal Mirror is the leading survival signal mirror on the market. It is made of ¼" laminated glass that is shatter resistant. Available in 2", 3" and 4".

20606
20706
20806



DAYLIGHT SIGNAL FIGURES

Anchor ball Ø60 cm
Diamond shape
Cone shape / Triangle

2305
1105
905



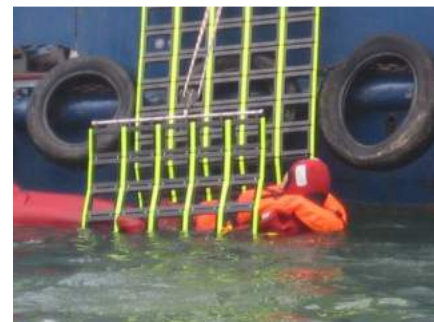
FIBRELIGHT / RECOVERY CRADLE

SOLAS approved Cradle is a maritime recovery system that can be operated by a single crew member. Can also serve as a boarding ladder, scramble net and stretcher. It is lighter, more compact, and more versatile than any comparable devices. The cradle requires only regular inspections and minimal maintenance every three years. The cradle can be easily rolled and stowed. The Fibrelight Recovery Cradle is primarily designed for use by rescue craft, rigid inflatables and ship lifeboats and marinas, however it can have multiple other uses. It forms both a robust scramble net as well as a temporary stretcher for immediate casualty evacuation.

Comes in 2, 3, 4 and 5 meter versions, all 1.3 meter wide. 3 meter version is only 5 kg.

**JASONS CRADLE / RESCUE CRADLE**

Jason's Cradle® FRC Kits are proven to aid in the safe and speedy recovery of man-overboard victims in the preferred horizontal position. They are currently in service globally with most Navies' and are considered a vital piece of safety equipment. SOLAS Approved and guaranteed for 3 years.

**JASONS CRADLE STRETCHER**

The Jason's Cradle® Recovery Stretcher is the safest and most universally accepted method of rescuing a casualty from the water. The horizontal recovery position assists in enabling the casualty's blood to remain in the upper torso helping to minimise the potentially fatal effects of Circum Rescue Collapse.

**JASONS CRADLE SCRAMBLE NET**

The scramble net is suitable for high sided vessels, rescue zones and mass recovery/evacuation. Our bespoke service offers the flexibility to meet all your requirements by tailoring the Jason's Cradle system to suit any vessel.





1071501

SECUMAR Alpha 150N

Standard 150N lifejacket for industrial use. High comfort with front click buckle, fleece neck and very flat packing method.

SPR welding cover available as accessory.



1228901

SECUMAR Alpha 275N

Standard 275N lifejacket for industrial use. High comfort with front click buckle, fleece neck and very flat packing method. Window for quick function check.

SPR welding cover available as accessory.



1244901

SECUMAR Alpha 275N-3D

275N lifejacket for industrial use. High comfort with front click buckle, fleece neck and very flat packing method. Window for quick function check. Buoyancy chamber with 3D shape.

SPR welding cover available as accessory.



12401

SECUMAR Golf Work 150N

Standard 150N lifejacket for industrial use. Front anchor buckle and comfortable packing method.

Also available with SPR welding cover art. 1303701



SECUMAR Golf Work 275N

Standard 275N lifejacket for industrial use. Front anchor buckle and comfortable packing method.

Also available with SPR welding cover art. 1303901



SECUMAR Golf Work 275N AS

275N lifejacket for industrial use and together with fall arrest harness. Front anchor buckle and comfortable packing method. Protective cover with heavy duty SPR material on front, and window for quick function check.



SECUMAR Golf Work 275N HV

275N lifejacket for fire brigade use and together with breathing apparatus. Front anchor buckle and comfortable packing method. Split back strap to allow the user to carry fire brigade equipment.

Also available with ALU welding cover art. 1399601



SECUMAR 40 SF

360N lifejacket for fire brigade use. Reinforced buoyancy chamber and ALU protective cover. 40 SF can be worn with a fire brigade helmet even when inflated. Split back strap to allow the user to carry fire brigade equipment.



SECUMAR Golf Twin 150N
SOLAS approved 150N lifejacket. 2 chamber system with front click buckle, emergency light and comfortable packing method.

1397001

Also available with SPR welding cover art. 1397201



SECUMAR Golf Twin 275N
SOLAS approved 275N lifejacket. 2 chamber system with front click buckle, emergency light and comfortable packing method.

Also available with:
Integrated Harness for lifeline art. 1416401
SPR welding cover art. 1397201
Cordura cover art. 1412501



SECUMAR Alpha Twin 275N-3D TWZ
275N lifejacket 2 chamber system. High comfort with front click buckle, fleece neck and very flat packing method. Window for quick function check. Buoyancy chamber with 3D shape. High fitting of emergency light. Spray cap is standard.

1380601

Also available with:
Integrated Harness for lifeline art. 1380701
Integrated Harness for lifeline and pocket for PLB art.



SECUMAR DELTA 150 FERRY TWIN
The semi-circular shaped buoyancy chambers are a design-innovation and feature an unmatched compactness. This results in maximum safety for small storage space on ferries and passenger ships.

SOLAS lifejacket certified to IMO Res.
MSC.81(70) amended by MSC.200(80) and
MSC.207(81).



CO2-CARTRIDGES

1302402	SECUMAR PILLS 4PK FOR SECUMATIC 3001S
1143502	SECUMAR PILL-BOX 4 FOR SECUMATIC 4001S
92602	32g CO2-CARTRIDGE MANUAL
92702	32g CO2-CARTRIDGE AUTO
1353902	38g CO2-CARTRIDGE MANUAL
1312102	38g CO2-CARTRIDGE AUTO
92802	56g CO2-CARTRIDGE MANUAL
92902	56g CO2-CARTRIDGE AUTO
1189602	60g CO2-CARTRIDGE AUTO
91002	75g CO2-CARTRIDGE MANUAL
91102	75g CO2-CARTRIDGE AUTO
1143302	32g CO2-DOCK CARTRIDGE AUTO
1237802	32g CO2-DOCK CARTRIDGE MANUAL
1143402	56g CO2-DOCK CARTRIDGE AUTO
1250702	60g CO2-DOCK CARTRIDGE AUTO



1586102	EMERGENCY LIGHT Emergency light SECULUX LED
---------	---



5005	EMERGENCY LIGHT SOLAS approved manual activated with mounting clip.
5705	SOLAS approved water activated with mounting clip. Also available as recessed versions.



9605	EMERGENCY LIGHT SOLAS approved manual activated with mounting clip.
9505	SOLAS approved water activated with mounting clip. Also available as recessed versions.



HANSEN SEA-LIFE

SOLAS approved inherent lifejacket with reflective tape, whistle, bodyline and emergency light. HH 2010 has a practical, space-saving design, which makes for a compact fit in onboard cabinets. The volume is 30 to 35% less than most of other lifejackets.

Also available as child and infant models.



HANSEN SEA-LIFE TP

As basic model HH 2010 but with neoprene jacket included. Insulation against hypothermia/heat loss from the head, neck, chest and groin. Design that protects vital body parts and reduces cold shock. Serves as a regular jacket and is easy to take on. Impossible to slip out of the vest when it's properly dressed. Provides good sight and freedom of movement.



COSALT Premier 2010

SOLAS approved inherent lifejacket with reflective tape, whistle, bodyline and emergency light. The Patented design Neck System that can adjust to the wearer's neck size so it can be worn by anyone from 43kg up to 140kg.

Also available as:
Crew version, Hi-Vis yellow.
Child and infant models.



SECUMAR BRAVO

Standard inherent 100N lifejacket for light use.
With reflective tape, whistle and click buckle.
Available in sizes from 5 – 120 kg.



SECUMAR JUMP

Standard 50N swim aid for light use.
Specially designed for kayak- & Canoes.



SECUMAR 11M

Hard wearing inherent lifejacket for rescue organisations for use in disaster areas, Navy.



SECUMAR VIVO

50N adult buoyancy aid approved to ISO 12402-5 for canoes, kayaks and rowing boats.
One size fits all. High freedom of movement.
Easily adjustable.



MCMURDO MAX-G PLB

FAST FIND MAX G is an advanced Personal Locator Beacon which can be carried on your person at all times. Easy to use, with a three-stage activation to avoid accidental operation, the FAST FIND MAX G is waterproof to a depth of 10m and floats. When activated, the FAST FIND MAX G transmits a unique ID and your current GPS co-ordinates via the COSPAS-SARSAT global search and rescue satellite network, alerting the rescue services typically within 3 minutes. The inbuilt GPS pinpoints your location to within 62m and once within the area, the search and rescue services can quickly locate you using the unit's 121.5Mhz homing beacon and flashing LED SOS light. The Max-G can operate continuously for a minimum of 48 hours.

**MCMURDO FastFind 220**

Personal Location Beacon (PLB) is a personal safety device designed to alert search and rescue services and allow them to quickly locate you in the event of an emergency, on land or sea. When activated it transmits a coded message on the 406 MHz distress frequency which is monitored by the Cospas-Sarsat satellite system. McMurdo FastFind 220 is quick and easy to activate, with a safe stow antenna which automatically deploys when the unit is activated. The battery enables it to operate continuously for a minimum of 24 hours. Waterproof to a depth of 10m, the FastFind 220 is also supplied with a flotation pouch, for easy retrieval.

**RescueME MOB1**

AIS MOB device with integrated DSC – the rescueME MOB1 from Ocean Signal. The MOB1 is compatible with even the most compact inflatable life-jackets. The MOB1 is intended to be installed within the life-jacket and will activate automatically on inflation, sending the first alert within 15 seconds. The MOB1 communicates with the vessel you have been separated from and other vessels in the vicinity (up to 5 miles range dependent on conditions). Once activated your MOB1 will transmit an alert to all AIS receivers and AIS enabled plotters in the vicinity. The integrated GPS ensures precise location is sent to your vessel and any others that may be assisting. An additional feature of the MOB1, is its ability to activate the DSC alarm on your vessels VHF, alerting your crew to the situation.



SEA-MARSHALL AU9 WF (WindFarm)

You use the AU9-WF with a MRT SARFINDER base unit as part of a Maritime Survivor Locating System (MSLS).

Seconds after you hit the water, it sends a homing signal on 121.5 MHz, which the base unit tracks. Using the radio direction finding tone, your crew will be able to save you quicker to give you the best possible chance of survival. Search and Rescue can also track your position using the 121.5 MHz frequency. With a 500mW power output, the AU9-WF can transmit its emergency signal much further than other MSLDs. Its longer range can make all the difference to the safety of crew in remote locations, such as offshore wind farms.



SEA-MARSHALL AU10

AU10 automatically alerts on 121.5MHz and tracks casualties via AIS to within 10 metres. With GPS position updated every minute via AIS, your and every nearby vessel becomes an instant SAR asset.

Automatic activation will alert you of every MOB incident within 2 – 5 seconds, track casualties up to 75 miles away



EasyRescue AIS-SART

The Easy Rescue is an AIS-SART. With a built in GPS it transmits an emergency AIS-SART sentence which triggers an alarm on all AIS enabled chart plotters / PC's within range, along with the Lat/Long of the liferaft / lifeboat. The GPS is a new generation fast acquiring type and the VHF AIS transmitter repeats the message and position several times per minute. This enables all vessels within range to assist with the rescue if they have an AIS receiver or transponder.

Comes in different versions: Manual, automatic, AIS DSC etc.





HANSEN SEA-Eco

6 hour immersion suit.

For off-shore supply vessels, bulk carriers, commercial ferries, container and freight ships in cold waters. To be used together with lifejacket.

Universal and XXL

Option: Vacuum packing

Also available with neck floatation for use without lifejacket.



Recommended

HANSEN SEA-Nordic

6 hour immersion suit

For off-shore supply vessels, bulk carriers, commercial ferries, container and freight ships in cold waters.

Can be used without additional lifejacket.

Medium, Universal and XXL

Option: Vacuum packing



Top of the line

HANSEN SEA-Arctic

6 hour immersion suit

For off-shore supply vessels, bulk carriers, commercial ferries, container and freight ships in cold waters. With integrated inflatable bladder to secure correct position in water. To be used without additional lifejacket.

Universal and XXL

Option: Vacuum packing



HANSEN E307-MK2

6 hour immersion suit

Immersion suit on board fishing vessels, merchant ships and offshore installations. PU coated flame retardant, waterproof Oxford Nylon.

Universal and XXL



AQUATA V20 OPC

6 hour immersion suit

For off-shore supply vessels, bulk carriers, commercial ferries, container and freight ships in cold waters. To be used with additional lifejacket.

140 cm/165 cm/185 cm/205 cm



AQUATA ARO V20 / ARO V40

6 hour immersion suit

For off-shore supply vessels, bulk carriers, commercial ferries, container and freight ships in cold waters. V40 with 7 mm. Neoprene for Arctic areas. Can be used without additional lifejacket.

140 cm/165 cm/185 cm/205 cm



MULLION SMART SOLAS 2A & 2

6 hour immersion suit

For off-shore supply vessels, bulk carriers, commercial ferries, container and freight ships in cold waters. Inherent buoyancy in excess of 160 N. Extra thermal floatation lining permanently attached provides 6 hours of thermal protection.

Also available with integrated 275N lifejacket.
S-XL



HANSEN SEA-Work

1 hour Anti-Exposure-Suit (AES)

Work suit /constant wear suit developed in close contact with demanding user-groups in the maritime environment. The suit is intended for use by maintenance workers in exposed areas. The suit is highly ergonomic in construction and offers the user several extra features compared to a conventional abandonment suit for emergency use only.

XS-XL

**HANSEN SEA-MOB**

1 hour Anti-Exposure-Suit (AES)

For evacuation and rescue personnel on ships and for use in MOB/FRB operations. 3mm flame retardant, waterproof neoprene providing insulation and buoyancy. Boots may be used with flippers.

XS-XXL

**HANSEN SEA-RESCUE**

Surface Operations Suit developed for rescue crews. 5mm flame retardant, waterproof neoprene providing insulation and buoyancy. Detachable hood and gloves. Boots for use with flippers.

XS-XXL



AQUATA GT-100

1 hour Anti-Exposure-Suit (AES)

For evacuation and rescue personnel on ships and for use in MOB/FRB operations. Overall for Rescue Operations (SOLAS 34 TPA). 3-layer tear-proof nylon with a breathable membrane. Watertight main zipper from left hip around the neck to the left shoulder (can be opened and closed single-handedly), attached hood. All seals made of heavy-duty latex, 5-finger semidry gloves made of 3.0 mm neoprene. High safety boots with steel toe cap, heavy-duty pads on knees, elbows and bottom, knee pockets for adding further protective cushions, large pocket attached to the outside of suit.



Recommended

MULLION SMART SOLAS 1A & 1

1 hour Anti-Exposure-Suit (AES)

For off-shore supply vessels, bulk carriers, commercial ferries, container and freight ships in cold waters. Inherent buoyancy in excess of 80 N.

Also available with integrated 275N lifejacket. S-XL



MULLION THERMAL FLOATATION LINER

Can be fitted into the Smart SOLAS Suit 1 and 1A to give 6 hours of thermal protection.

S-XL



HANSEN SEA Wind

Ergonomy – pre-shaped construction with 100% freedom of movement.

Breathability – durable fabrics with highly breathable properties from Gore-Tex.

Lightweight – made as a shell product to reduce weight. Ventilation, pit-zips (underarm-zips) to enhance ventilation in controlled situations. Waterproof zip in collar for easy donning. Pockets, roomy pockets constructed with mesh to enhance the breathable properties of the fabric and placed where they are of no hindrance to

normal movement. Gloves and hood in neoprene, lifting becket and pen-pocket For easy integration with safety equipment as harnesses and lifejackets. The suit fulfils the requirements of the IMO/Solas LSA code, as a 1 hour immersion/quick donning suit without internal buoyancy.

Features:

Dry suit w/feet and easy access.

Soft waterproof zip.

Pit-zips for enhanced ventilation.

Highly breathable Gore-Tex Hi-vis color.

Reinforcement at exposed areas.

Mesh Pockets with room for hood, gloves and necessities (PLB, pens etc) + inner pocket.

Construction with special attention to freedom of movement.

Super Soft Neoprene closures in neck and wrists.

S-XL

ISO 15027



AQUATA GT-Wind

GT wind is a suit specially developed for using during transport from shore to offshore installations, as well as use during the work on the installations.

Breathable 3 layer bright orange polyester watertight construction, laminated to a breathable PU film.

Neoprene neck seal covered by a collar and integrated hood. Separate 3mm neoprene hood for use prior the emergency jumping. Rain hood which fit nicely over the neck seal. Double neoprene smooth arm seals, 3mm neoprene 5 finger gloves connected to the suit with a webbing belt. Whistle, Radio pocket, High volume pockets on both legs, on both arms small additional pockets. Drysocks with covered non-slip soles. Solas reflective tape according to regulation.

Knee, back arms and sitting area have reinforcements. Kneepads are developed in a way that additional foam material can be pushed in, to accommodate kneeling jobs. Zipper goes from the front side to the neoprene neck seal and is easy to open. Inside additional straps are fixed to give a better fit, as well to wear the suit with top down for relaxing periods.

S-XXL

Optional: XXS, XS and XXXL



ISO 15027



URSUIT RDS Wind Energy

A special model of the popular RDS Rapid Donning Suit especially made to meet the demands of the offshore industry.

Collar structure is open, which eases dressing and enables ventilation in warm weather.

Material: Gore-Tex® fabric based upon the ePTFE membrane, allowing vapour to get through but remaining completely watertight. Seam construction: double seams so that the seam will not open even when worn. Inside the seams are heat seal taped and reinforced to be 100 % watertight. Reflective tapes: The suit is equipped with several reflective tapes in right places, which assures visibility in all conditions. The soft and durable reflective tapes are developed by 3M in accordance with the directive on marine equipment.

Socks made of same fabric as the suit itself enables use of any professional footwear. Knee and back reinforcements made of Cordura material. Hood: attached hood, which protects against wind and rain. Separate 3 mm neoprene hood, which protects against cold water. Gloves: integrated 3mm 5-finger neoprene gloves in sleeve pockets. Supplied in a carrying bag.

S-XXL

Option: With fixed safety boot

ISO 15027



URSUIT RDS ETSO

A special model of the popular RDS Rapid Donning Suit especially made to meet the demands of the offshore industry. Material: Gore-Tex® OWFS Aramide 3-layer cover based upon the ePTFE membrane, allowing vapour to get through but remaining completely watertight. Smart Lining regulates body heat in different conditions. Lining is attached with a zipper so that it can be easily removed and washed. Seam construction: double seams so that the seam will not open even when worn. Inside the seams are heat seal taped and reinforced to be 100 % watertight. Reflective tapes: The suit is equipped with several reflective tapes in right places, which assures visibility in all conditions. The soft and durable reflective tapes are developed by 3M in accordance with the directive on marine equipment. Socks made of same fabric as the suit itself enables use of any professional footwear. Knee and back reinforcements made of Cordura material. Hood: attached splas hood, which protects against wind and rain. In addition a separate 3 mm neoprene hood, which protects against cold water. Gloves: integrated 3mm 5-finger neoprene gloves in sleeve pockets.



HANSEN SEA Wind MKII ETSO

4h - Helicopter transportation suit, ETSO 2C503, SOLAS, LSA code 2.3 & ISO 15027-1 Class B. With thermal lining, lifting strap, pit zips & attached hood in back pocket. Gloves in sleeve pockets. To be worn with compatible ETSO lifejacket.

XS-XXL

HANSEN SEA-AIR

6 hour immersion suit
For offshore, helicopter transport and as a personal abandonment suit.
Inner lining that provides insulation and buoyancy. An Intelligent fabric stabilise the inside temperature of the suit and reduces body sweat significantly. Certified for aviation application according to ETSO 2C502 as integrated helicopter crew and passenger immersion suit, SOLAS approved as LSA-code section 2.3 Insulated Immersion Suit and certified to NMD requirements for Offshore Immersion Suits To be used without lifejacket.

XS-XXXXL



HANSEN SEA-PILOT

Designed for helicopter pilots.
For flights where thermal properties are important when evacuating from a ditched helicopter
3mm flame retardant neoprene
Water tight socks to be used with own footwear
XS-XXL



HANSEN NAVY QUICK DONNING

IMO/SOLAS approved as un-insulated survival suit.
PU coated nylon and insulated hood.
Detachable gloves. To be used on top of clothing and shoes. For persons 150 - 200cm.
Provided in vacuum bag to be worn around the waist.
Universal size



HANSEN SEA-PASS

Emergency thermal protection suit for passenger and recreational vessels. Approved in accordance with Norwegian regulations, as a passenger suit. Thermal protection in accordance with IMO/Solas LSA Code as an uninsulated immersion suit (1 hour in water temperature less than 5 degrees Celsius) Extremely light weight and easy to store Eliminates cold shock. The suit with compatible life jacket is approved as substitute to thermal lifejackets according to NMD regulations. Acknowledged by ErgoPro to be in accordance with EN ISO 15027-3 requirements for non-insulated immersion suits (Thermal class D suit). Vacuum packing for extended service interval to 10 years



Sizes: 50-100 cm / 100-150 cm / 150-200 cm

AQUATA GT-10

Solas suit made out of orange breathable material. Variable thigh and breast pockets. Concealed horizontal front fastener waterproof. Arm seals neoprene, neck seals latex. Reflex stripes, strapfixed 3 fingers gloves. Knee protection. Attached socks flexible watertight neoprene. Inside fixings prepared for optional foam section with 5 kg lift. Suit will be delivered in carry bag.



GT20

AQUATA GT-20

Solas suit made out of orange breathable material. Variable thighs and Arm pockets. Concealed horizontal front fastener waterproof. Arm seals neoprene, neck seals variably from latex and Neoprene. Reflex stripes, strapfixed 5 fingers gloves. Knee and bottom protection Cordura, separate neoprene hood in pocket. Attached socks flexible watertight neoprene.



MULLION NORTHSEA SUIT

Standard floatation suit with inherent buoyancy in excess of 50 Newton. Fully waterproof and abrasion resistant outer fabric.
S-XXL

50N
EN393



MULLION AQUAFLOAT SUPERIOR

Inherent buoyancy in excess of 50 Newton /
Protects against cold water shock and hypothermia
/ Fully waterproof and abrasion resistant outer
fabric. Reinforcements on knees and seat.
S-XXL

50N
EN393
EN343-3-1



MULLION X5000

Inherent Buoyancy in excess of 50 Newton.
Provides a degree of thermal protection against hypothermia and cold water shock. Waterproof pockets lined with fleece. Adjustable neoprene anti-water securements at wrists. Reflective tape on hood, wrists & ankles. Air escapes eyelets under the chest flaps. Under-arm ventilation zips & gussets for regulating internal temperature. Back ventilation. Highly breathable outer fabric. Perforated foam for breathability.
S-XXL

Also available as 2-piece suit (Jacket and trouser)

50N
EN393
EN343-3-1



MULLION X6 SUIT

Inherent buoyancy in excess of 80N (foam lined all the way down to the ankle) / Provides a degree of thermal protection against cold water shock and hypothermia / Fully waterproof / SOLAS/IMO approved reflective tape on hood, upper arms, wrists and ankles / High-visibility yellow adjustable insulated peaked hood, with built-in chin and face protection stored into collar / Hip pockets with fleece hand warmer / Pocket on left arm with water-repellent flap / marine grade whistle / new ID pocket and possibility to add a SOLAS light / Extra pocket on the right arm for strobe light / Inner adjustable neoprene wrist seals / Extra strong reinforcement panels added to knees and seat area (600 Denier) / New style badge / Anti-flushing reflective straps to arms & legs including new easy grip pull tabs.

50N
EN393



MULLION ANTI-EXPOSURE SUIT (Non Solas)

Inherent buoyancy in excess of 70 Newton / Protects against cold water shock and hypothermia / Fully waterproof / SOLAS/IMO approved retro reflective tape / High-tenacity reinforcement to front legs and seat / Insulated hood to fit over large safety helmets / Possibility to increase thermal protection as well as the buoyancy by combining with thermal floatation liner (art. 1MC6)

50N
EN393
EN343-3-1



MULLION NORTHSEA JACKET

Inherent buoyancy in excess of 50 Newton / Provides a degree of thermal protection against cold water shock and delays hypothermia upon immersion / Fully waterproof outer fabric

MULLION NORTHSEA TROUSER

Inherent buoyancy in the form of 100% closed cell foam / Fully waterproof / All seams are taped / 2 hip pockets with water-repellent flaps / Leg zips for ease of donning over boots / Anti-flushing straps to legs / Adjustable elastic shoulder braces



MULLION AQUAFLOAT JACKET

For constant wear, general deck and crew use. Inherent buoyancy in excess of 50 Newton. Provides a degree of thermal protection against cold water shock and delays hypothermia upon immersion. Fully waterproof outer fabric. S-XXL

MULLION AQUAFLOAT TROUSERS

For constant wear, general deck and crew use. Inherent buoyancy in the form of 100 % closed cell foam. Fully waterproof. Reinforcements on knees and seat. 2 hip pockets with water-repellent flaps. Leg zips for ease of donning over boots.

50N
EN393
EN343-3-1



MULLION X6 JACKET

Inherent buoyancy in excess of 100N (when worn with X6 trousers) / Provides a degree of thermal protection against cold water shock and delays hypothermia upon immersion / Fully waterproof / SOLAS/IMO approved reflective tape on hood, upper arms and wrists / High-visibility yellow adjustable insulated peaked hood, with built-in chin and face protection stored into collar / Hip pockets with fleece hand warmer / Inner adjustable neoprene wrist seals / Extra strong reinforcement panels to seat /Crutch strap

MULLION X6 TROUSERS

Inherent buoyancy in excess of 100N (when worn with X6 Jacket) / Foam lined all the way down to the ankle / Fully waterproof / Adjustable over the shoulder braces / Extra strong reinforcement panels added to knees and seat area / Leg zips for ease of donning over boots / Tapered leg for a better fit / Anti-flushing reflective straps to legs including new easy grip pull tabs.



FLOATATION FIRE INTERVENTION



MULLION FIRE INTERVENTION JACKET

Fire Intervention Jacket(*) / Outer fabric NOMEX® / Reinforced shoulders / Anti-panic zipper under waterproof storm flap / Radio pocket / Name identification / Ergonomic sleeve / Retro-reflective striping / Fluorescent striping / 2 exterior pockets with waterproof interior pocket 1VOA - Fire Intervention Trousers(*): See separate product sheet

SUPERIOR QUALITY

- The performance of this suit exceeds level 2 of the new EN 469:2005
- Very high tear and abrasion resistant outer fabric
- Tensile strength > 3 x the EN 469 standard
- Tear strength > 4 x the EN 469 standard



MULLION FIRE INTERVENTION TROUSERS

Fire Intervention Trousers(*) / Outer fabric NOMEX® / 2 large pockets on upper leg / Safety stitch and lock stitch 5 threads / Reinforced knee protection / Long zipper

SUPERIOR QUALITY

- The performance of this suit exceeds level 2 of the new EN 469:2005
- Very high tear and abrasion resistant outer fabric
- Tensile strength > 3 x the EN 469 standard
- Tear strength > 4 x the EN 469 standard



MULLION FIRE INTERVENTION JACKET

Fire Intervention Jacket(*): Outer fabric NOMEX® / Shoulder protection (foam) / Quick release anti-panic zipper / Retro-reflective striping / Ergonomic sleeve / Fixed thermal lining / All seams: safety stitch + lock stitch 5 threads / 2 outside pockets + 1 inside pocket / adjustable sleeve narrowing

SUPERIOR QUALITY

- The performance of this suit exceeds level 2 of the new EN 469:2005
- Very high tear and abrasion resistant outer fabric
- Tensile strength > 3 x the EN 469 standard
- Tear strength > 4 x the EN 469 standard



MULLION FIRE INTERVENTION TROUSERS

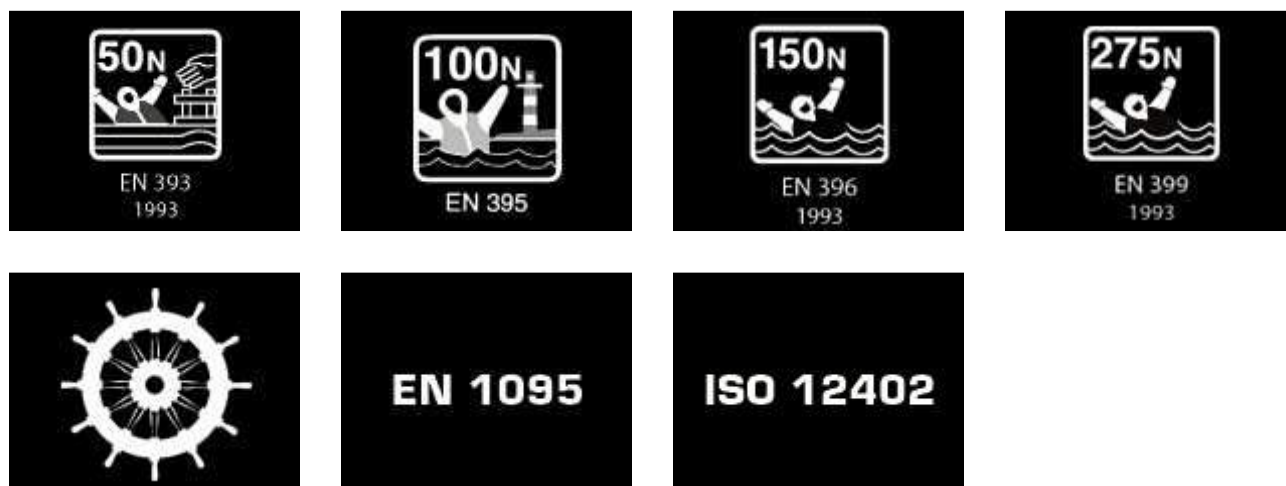
Fire Intervention Trousers(*): Outer fabric NOMEX® / Front fly with zipper / Ergonomic comfort design / Protected knees + anti-cut layer / Retro reflective striping / Zipper with gusset + flap

SUPERIOR QUALITY

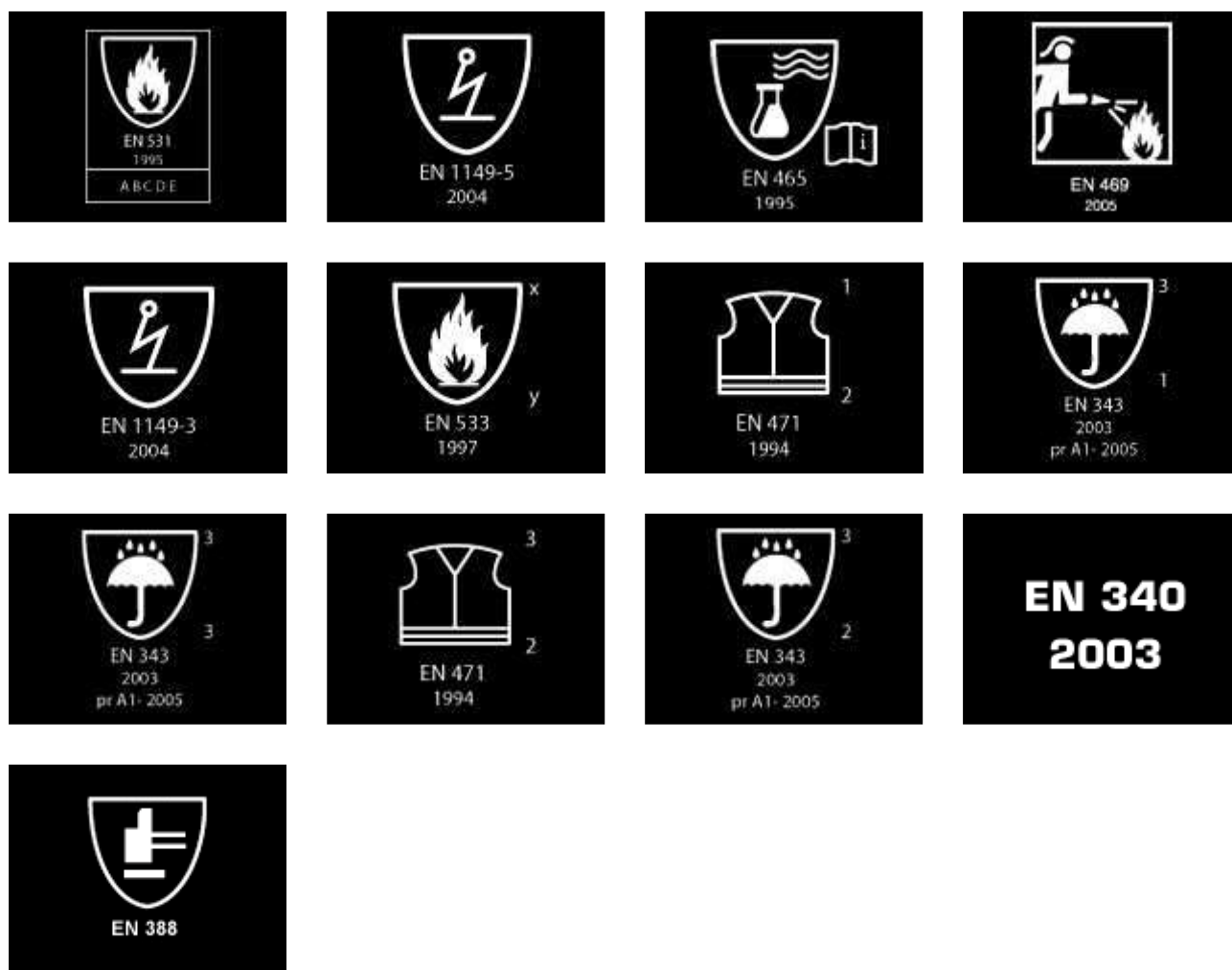
- The performance of this suit exceeds level 2 of the new EN 469:2005
- Very high tear and abrasion resistant outer fabric
- Tensile strength > 3 x the EN 469 standard
- Tear strength > 4 x the EN 469 standard



Maritime Standards



Industrial Standards





THROW OVER LIFERAFTS

ZODIAC throw-over liferafts.

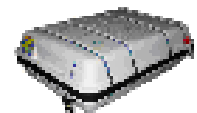
An extensive range includes 6, 8, 10, 12, 16, 20, 25, 37, 50 and 150 person liferaft. A or B pack.
Available in standard round containers.



LPC CONTAINER

An extensive range includes 6, 8, 10, 12, 16 and 20 person liferaft. A or B pack.
Available in standard square containers.



XTREME CONTAINER

An extensive range includes 6, 8, 10, 12 and 16 person liferaft. A or B pack.
Available in xtreme flat square containers.


STANDARD ROUND CONTAINER


 A PACK					B PACK			
Persons	Length	Width	Height	Weight	Length	Width	Height	Weight
6	1160	560	513	66	1160	560	513	54
8	1160	560	513	77	1160	560	513	60
10	1275	610	590	92	1160	560	513	64
12	1275	680	615	120	1275	610	590	89
16	1275	680	615	128	1275	610	590	90
20	1275	800	740	149	1275	680	615	98
25	1275	800	755	173	1275	680	615	116
50	1560	952	960	375	1560	852	835	255
100	1950	1050	975	560	1725	1050	1000	430
150 Venturi	-	-	-	-	1930	1150	1120	490

LPC CONTAINER

 A PACK					B PACK			
Persons	Length	Width	Height	Weight	Length	Width	Height	Weight
6	965	596	378	66	924	573	358	50
8	1088	666	388	79	965	596	378	58
10	1088	666	388	89	1088	666	388	65
12	1088	666	389	100	965	596	380	69
16	1160	730	468	130	1160	730	408	86
20	1160	752	505	144	1160	752	445	96

LIFERAFTS / THROW OVER

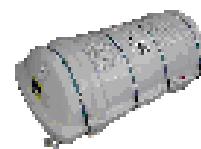
XTREME CONTAINER

 A PACK					B PACK			
Persons	Length	Width	Height	Weight	Length	Width	Height	Weight
6	790	555	340	64	790	555	260	48
8	840	570	340	74	840	570	294	57
10	940	640	344	87	940	640	314	63
12	940	640	344	96	940	640	314	67
16	1100	650	370	122	1100	650	340	86

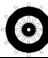
LIFERAFTS / SELFRIGHTING

THROW OVER SELFRIGHTING LIFERAFTS

An extensive range includes 6, 8, 10, 25, 37, 50 and 150 person liferaft. A or B pack.
Available in standard round containers.



STANDARD ROUND CONTAINER

 A PACK					B PACK			
Persons	Length	Width	Height	Weight	Length	Width	Height	Weight
6	1160	560	513	72	1160	560	513	58
8	1160	560	513	88	1160	560	513	69
10	1275	610	590	98	1160	560	513	73
12	1275	610	590	114	1160	560	513	82
25	1450	800	740	206	1530	680	620	146
37	1500	960	943	305	1450	800	740	220
50	1560	952	960	360	1560	852	835	246
150	3340	1150	1135	1340	3340	1050	1035	930

DAVIT LAUNCHED LIFERAFTS

Available in 12, 16, 20 25 and 37 person liferaft.
A or B pack.

Designed to be launched by a davit, ZODIAC davit-launched liferaft can also be dropped from up to 36 meters* in emergency evacuation conditions.



*25 an 37 persons davit-launched liferaft A Pack: 25 meters.

STANDARD ROUND CONTAINER

A PACK					B PACK			
Persons	Length	Width	Height	Weight	Length	Width	Height	Weight
12	1275	800	740	145	1275	680	615	110
16	1275	800	740	155	1275	680	615	110
20	1275	800	740	160	1275	680	615	115
25	1450	800	740	200	1275	800	740	140
37	1500	950	945	310	1450	800	740	200

DAVIT LAUNCHED SELFRIGHTING LIFERAFTS

Available in 25 and 37 person liferaft. A or B pack.
Designed to be launched by a davit, ZODIAC davit-launched liferaft can also be dropped from up to 36 meters* in emergency evacuation conditions.



*25 an 37 persons davit-launched liferaft A Pack: 25 meters.

STANDARD ROUND CONTAINER

A PACK					B PACK			
Persons	Length	Width	Height	Weight	Length	Width	Height	Weight
25	1450	800	740	220	1530	680	620	160
37	1500	950	945	330	1560	852	835	230

EPS / EXTENDED PACKING SERVICE LIFERAFTS

Full range of liferafts with 30 month service intervals available on request.

STACKABLE LIFERAFTS

Ask for special information/data sheets



MOB & FRB BOATS



ZODIAC RIBO 450


ZODIAC RIBO 450 Rigid Inflatable outboard engine type rescue boat. The boat is easily accessible and can be launched quickly with a lifting sling in any circumstances. Its carrying capacity is 6 persons. The RIBO 450 benefits are fast deployment and seaworthiness for man overboard rescue operation and liferaft towing (150 persons max).

Length	4,50 m.
Width	1,90 m.
Number of persons	6 Person
Weight w/equipment	246 kg.
Operational weight with outboard 40 HP and 6 persons	901 kg.
Engine (Long shaft)	25 - 40 HP
Hull / Tube material	GRP / Hypalon
Type approval	EC / MED



ZODIAC RIBO 600


ZODIAC RIBO 600 is a rigid inflatable rescue boat equipped with a SOLAS approved outboard engine. The boat is easily accessible and can be launched from a davit quickly with a lifting sling and associated hook at any time. Its carrying capacity is 6 persons. The boat is fitted with a self-righting system permitting to upright the boat when capsized. The RIBO 600 benefits from fast deployment and seaworthiness for man overboard rescue operation and / or liferaft towing.

Length	6,00 m.
Width	2,45 m.
Number of persons	6 Person
Weight w/equipment	494 kg.
Operational weight with outboard 120 HP and 6 persons	1200 kg.
Engine (Long shaft)	70 - 120 HP
Hull / Tube material	GRP / Hypalon
Type approval	EC / MED



ZODIAC FRB 600

ZODIAC FRB 600 is a rigid inflatable fast rescue boat equipped with a SOLAS approved outboard engine. The boat is easily accessible and can be launched quickly with a lifting frame and associated hook in any circumstances. Its carrying capacity is 6 persons. The boat is fitted with a self righting system permitting to up right the boat when capsized. The FRB 600 benefits from fast deployment and seaworthiness for man over board rescue operation and / or liferaft towing.

Length	6,00 m.
Width	2,45 m.
Number of persons	6 Person
Weight w/equipment	700 kg.
Operational weight with outboard 120 HP and 6 persons	1445 kg.
Engine (Long shaft)	70 - 120 HP
Hull / Tube material	GRP / Hypalon
Type approval	EC / MED



ZODIAC HURRICANE 630 FRB

ZODIAC H630 FRB is a rigid inflatable SOLAS approved Fast Rescue Boat designed for customers who require a real sea going practical and performing boat for use on board their vessel instead of a craft that simply conforms to the basic regulations. Available with diesel power in either waterjet or outdrive configurations, the H630 has been in constant use with Military and Coast Guard entities around the world solely due to its ruggedness and reliability at sea. This FRB can be built to other configurations using the same laminate materials and approved components to suit individual needs.

Length	6,70 m.
Width	2,59 m.
Number of persons	6 Person
Weight w/equipment	1650 kg.
Operational weight with 6 persons and Volvo D3-190HP+SX Stern drive	2325 kg.
Engine	Inboard diesel
Hull / Tube material	GRP / Hypalon
Type approval	EC / MED



ZODIAC HURRICANE FRB

ZODIAC HURRICANE FRB is rigid inflatable SOLAS approved Fast Rescue Boats designed for customers who require a real sea going practical and performing boat for use on board their vessel instead of a craft that simply conforms to the basic regulations. Available with diesel power in either waterjet or outdrive configurations, the Hurricane brand has been in constant use with Military and Coast Guard entities around the world solely due to its ruggedness and reliability at sea. This FRB can be built to other configurations using the same laminate materials and approved components to suit individual needs.

Length	m.
Width	m.
Number of persons	Person
Weight w/equipment	kg.
Operational weight with outboard 120 HP and 6 persons	kg.
Engine (Long shaft)	HP
Hull / Tube material	
Type approval	



EVINRUDE E-TEC / SOLAS APPROVED


Outboard engines from 25 HP to 90 HP for use on Man Over Board-boats (MOB) and Fast Rescue-boats (FRB). Remote control or tiller steering versions.

Evinrude E-TEC engines in versions approved according to SOLAS (Safety Of Life At Sea). The certificate is issued for each engine by the independent notified body Bureau Veritas. The engines have been through demanding test programme prior to certification. Tests have included the ability to start in extreme cold environments as well as being able to restart after capsizing. These and other tests are required to be run satisfactorily before the engines can carry the SOLAS wheel mark. Based on Evinrude E-TEC standard models, these engines are modified to adhere to the demands of SOLAS. This includes replacement of some components and the addition of a propeller guard.



SE25DR/L	25 HP Tiller steering/Rope start	15"/20"	66/68 kg.	R2/578cc
SE25DPL	25 HP Remote steering/Electric start	20"	80 kg.	
SE30DRL	30 HP Tiller steering/Rope start	20"	68 kg.	R2/864cc
SE30DPL	30 HP Remote steering/Electric start	20"	80 kg.	
SE40DRL	40 HP Tiller steering/Rope start	20"	105 kg.	
SE40DPL	40 HP Remote steering/Electric start	20"	109 kg.	
SE50DPL	50 HP Remote steering/Electric start	20"	109 kg.	R2/864cc
SE60DPL	60 HP Remote steering/Electric start	20"	109 kg.	
SE75DPL	75 HP Remote steering/Electric start	20"	145 kg.	R3/1295cc
SE90DPL/X	90 HP Remote steering/Electric start	20"/25"	145/148 kg.	





ZODIAC GRAND RAID - GR

The Grand Raid name is almost as old as Zodiac itself and has gone through many design and feature evolutions to still be very relevant in today's market.

GR's form the backbone of many small boat fleets and are pretty much unique in its full equipment definition.

They continue to answer the needs of users worldwide.



	MK2 GR	MK3 GR
Length	4,20 m.	4,70 m.
Width	1,75 m.	1,90 m.
Number of persons	6 Person	8 Person
Weight empty boat	86 kg.	110 kg.
Payload	920 kg.	1270 kg.
Engine	Max 50 HP / 20"	Max 65 HP / 20"
Hull / Tube material	Hypalon/Hypalon	Hypalon/Hypalon
Type approval	EC – Cat. C	EC – Cat. C

HEAVY DUTY - HD

ZODIAC HEAVY DUTY - HD

Heavy Duty fabric combined with the Futura® hull design permit these heavy payload carriers to be delivered by helicopter or truck in places with limited access. Assembled by 2 people, they carry extremely heavy loads for their size. This unique range of inflatable boats designed primarily to carry heavy loads at planning speeds due to its patented Futura hull shape. HD uses heavy materials and is reinforced throughout making it suitable for extreme service. Even at sizes up to 7 m, they can be rolled up into a bag and thrown into the back of a pickup truck or aircraft.



	MK4 HD	MK5 HD	MK6 HD
Length	5,30 m.	5,85 m.	7,00 m.
Width	2,14 m.	2,48 m.	2,88 m.
Number of persons	12 Person	15 Person	20 Person
Weight empty boat	180 kg.	250 kg.	320 kg.
Payload	1690 kg.	2520 kg.	4100 kg.
Engine, single	Max 80 HP / 20"	Max 115 HP / 20"	Max 175 HP / 20"
Engine, twin	Max 2*40 HP / 20"	Max 2*50 HP / 20"	Max 2*70 HP / 20"
Hull / Tube material	Hypalon/Hypalon	Hypalon/Hypalon	Hypalon/Hypalon
Type approval	EC – Cat. C	EC – Cat. C	EC – Cat. C

ZODIAC FUTURA COMMANDO – FC

Well known throughout the world as the definitive Special Forces boat, the FC range is used by more elite soldiers and sailors than any other craft worldwide. It is the only craft of its type that has actually been used in combat in different theatres and comes thru with flying colours. This is a result of its unique patented hull shape and various floor systems that allows it to carry combatants in a variety of missions. The hull shape is especially important as it can get a large load on the plane as well as give the driver unsurpassed manoeuvrability in different and often dangerous conditions. Continually being updated for its ever-changing roles, the FC range is Zodiac's most recognizable military boat.



	FC 420	FC 470	FC 530	FC 470 EVO7
Length	4,20 m.	4,70 m.	5,30 m.	4,70 m.
Width	1,75 m.	1,90 m.	2,14 m.	1,90 m.
Number of persons	6 Person	10 Person	12 Person	10 Person
Weight empty boat	120 kg.	146 kg.	180 kg.	122 kg.
Payload	870 kg.	1270 kg.	1690 kg.	1250 kg.
Engine, single Engine, twin w/rigid floor	Max 30 / 50 HP / 20" -	Max 40 / 65 HP / 20" Max 2*30 HP / 20"	Max 50 / 80 HP / 20" Max 2*40 HP / 20"	Max 55 HP / 20" -
Hull / Tube material	Hypalon/Hypalon	Hypalon/Hypalon	Hypalon/Hypalon	Hypalon/Hypalon
Type approval	EC – Cat. C	EC – Cat. C	EC – Cat. C	EC – Cat. C

ERB – Emergency Response Boats

ZODIAC EMERGENCY RESPONSE BOAT - ERB

Zodiac Milpro ERB range has been specifically designed to meet the demanding requirements of Search & Rescue Organisations throughout the World. Highly portable, compact packed size and can be rapidly deployed by means of high pressure inflation systems, within minutes. These specific features, together with the expertise of Zodiac Milpro, make the Zodiac Milpro ERB range the ideal partner when quality of design and manufacture count. Available with HPP floor deck, slatted alu deck or rigid deck.



	ERB 310	ERB 380	ERB 400
Length	3,20 m.	3,88 m.	4,10 m.
Width	1,60 m.	1,68 m.	1,90 m.
Number of persons	4 Person	6 Person	8 Person
Weight empty boat	40 kg.	55 kg.	65 kg.
Payload	530 kg.	650 kg.	920 kg.
Engine, single	Max 10 HP / 15"	Max 25 HP / 15"	Max 40 HP / 20"
Hull / Tube material	Hypalon/Hypalon	Hypalon/Hypalon	Hypalon/Hypalon
Type approval	EC – Cat. C	EC – Cat. C	EC – Cat. C

ZODIAC WORK BOAT - WB

Our multi role heavy duty Work Boats make the ideal platform of choice. The crafts are easy to assemble, inflate and launch. Their large diameter buoyancy tubes and wide beam give greater stability and high manoeuvrability with planning speed performance even with heavy loads.



	WB 400	WB 465	WB 525
Length	4,10 m.	4,71 m.	5,26 m.
Width	1,90 m.	2,12 m.	2,19 m.
Number of persons	8 Person	10 Person	12 Person
Weight empty boat	93 kg.	122 kg.	143 kg.
Payload	920 kg.	1300 kg.	1500 kg.
Engine, single	Max 40 HP / 20"	Max 60 HP / 20"	Max 70 HP / 20"
Hull / Tube material	Hypalon/Hypalon	Hypalon/Hypalon	Hypalon/Hypalon
Type approval	EC – Cat. C	EC – Cat. C	EC – Cat. C



ZODIAC SEA RIDER

SeaRider has been proven in operation use around the world, by both military and professional operators; with its unique water ballast system and deep "V" hull, giving the craft exceptional sea keeping capabilities, yet still offering high performance and manoeuvrability in the heaviest of seas. The Zodiac Milpro SeaRider can be ship launched, and if required, self righting equipment, and inboard variants can be supplied on certain models.



	SR 4.0	SR 4.7	SR 5.4	SR 6.3
Length	4,15 m.	4,74 m.	5,51 m.	6,42 m.
Width	1,82 m.	2,03 m.	2,03 m.	2,34 m.
Number of persons	6 Person	8 Person	10 Person	15 Person
Weight empty boat	160 kg.	250 kg.	320 kg.	680 kg.
Payload	580 kg.	815 kg.	920 kg.	1450 kg.
Engine, single	Max 50 HP / 20"	Max 70 HP / 20"	Max 90 HP / 20"	Max 150 HP / 25"
Engine, twin	-	Max 2*30 HP / 20"	Max 2*40 HP / 20"	Max 2*90 HP / 20"
Hull / Tube material	GRP/Hypalon	GRP/Hypalon	GRP/Hypalon	GRP/Hypalon
Type approval	EC – Cat. C	EC – Cat. C	EC – Cat. C	EC – Cat. C

SEA RIB MARINE & NAVY - SRMN
ZODIAC SRMN

Zodiac's SRMN were originally built for Military use so their hulls are reinforced to take the maximum G forces that are applied when fully laden and powered at maximum speed. These Sea Ribs are simple, functional and tough. The collar is a heavy-duty neoprene hypalon with Zodiac's special intercommunicating valves. The total deck area is open and reinforced allowing installation anywhere of our wide range of steering consoles, bolsters and other equipment.



	SRMN 500	SRMN 550	SRMN 500	SRR 650
Length	5,00 m.	5,50 m.	5,00 m.	6,50 m.
Width	2,08 m.	2,18 m.	2,08 m.	2,50 m.
Number of persons	10 Person	14 Person	10 Person	5 / 15 Person
Weight empty boat	240 kg.	300 kg.	240 kg.	600 kg.
Payload	1150 kg.	1270 kg.	1150 kg.	1300 / 2000 kg.
Engine, single	Max 90 HP / 20"	Max 120 HP / 20"	Max 90 HP / 20"	Max 150 HP / 25"
Engine, twin	-	Max 2*50 HP / 20"	-	Max 2*80 HP / 20"
Hull / Tube material	GRP/Hypalon	GRP/Hypalon	GRP/Hypalon	GRP/Hypalon
Type approval	EC – Cat. C	EC – Cat. C	EC – Cat. C	EC – Cat. B / C

ZODIAC SRR

Zodiac's Sea Rib Responders are built for Military use, hulls are reinforced to take the maximum G forces that are applied when fully laden and powered at maximum speed. They are simple, functional, tough, and have been designed to improve maintenance and user's comfort. Removable tube to make maintenance and eventual change easier and faster. Decks are self draining, and feature a moulded bow box and aft motor well to provide convenient storage volumes (*). These boats come with a large capacity built in fuel tank (*). * not SRR 420



	SRR 420	SRR 530	SRR 650
Length	4,20 m.	5,30 m.	6,48 m.
Width	1,85 m.	2,20 m.	2,56 m.
Number of persons	6 Person	12 Person	15 Person
Weight empty boat	220 kg.	340 kg.	712 kg.
Payload	750 kg.	1150 kg.	1850 kg.
Engine, single Engine, twin	Max 40 HP / 20" -	Max 90 HP / 20" -	Max 150 HP / 25" Max 2*80 HP / 20"
Hull / Tube material	GRP/Hypalon	GRP/Hypalon	GRP/Hypalon
Type approval	EC – Cat. C	EC – Cat. C	EC – Cat. B / C

	SRR 750	SRR 870	SRR 870 CABIN
Length	7,40 m.	8,79 m.	8,79 m.
Width	2,90 m.	3,05 m.	3,05 m.
Number of persons	16 Person	18 Person	12 Person
Weight empty boat	959 kg.	1578 kg.	2007 kg.
Payload	2114 kg.	2076 kg.	1650 kg.
Engine, single Engine, twin w/rigid floor	Max 250 HP / 25" Max 2*150 HP / 20"	Max 350 HP / 30" Max 2*250 HP / 25"	Max 350 HP / 30" Max 2*250 HP / 25"
Hull / Tube material	GRP/Hypalon	GRP/Hypalon	GRP/Hypalon
Type approval	EC – Cat. B / C	EC – Cat. B / C	EC – Cat. B / C

ZODIAC SRA

SEA RIB® ALUMINIUM (SRA) is built for demanding professional users and designed to be strong and reliable. Thanks to the experience acquired with SEA RIB® RESPONDERS™ and the aluminium hull building in accordance with its customers needs, Zodiac Milpro has developed the SRA range to be strong, efficient and modular. The aluminium hull is capable to face the hardest sea conditions and the inflatable D-shape collar technology increases significantly the usable deck area. The new Zodiac Milpro's SRA range is fully versatile and benefits from many deck configuration and options thanks to the deck tracks technology, allowing rapid reconfiguration to suit every mission.



	SRA 750 OB	SRA 750 OB D-Shape	SRA 750 IO	SRA 750 IO D-Shape
Length	7,36 m.	6,77 m.	7,36 m.	6,77 m.
Width	2,76 m.	2,76 m.	2,76 m.	2,76 m.
Number of persons	16 Person	16 Person	16 Person	16 Person
Weight empty boat	978 kg.	1060 kg.	943 kg.	1040 kg.
Payload	2670 kg.	2670 kg.	2028 kg.	2028 kg.
Engine, single	Max 250 HP / 25"	Max 250 HP / 25"	Max 300 HP	Max 300 HP
Engine, twin	Max 2*150 HP / 20"	Max 2*150 HP / 20"	-	-
Hull / Tube material	Alu/Hypalon	Alu/Hypalon	Alu/Hypalon	Alu/Hypalon
Type approval	EC – Cat. B / C	EC – Cat. B / C	EC – Cat. B / C	EC – Cat. B / C



ZODIAC HURRICANE RIBS

The Zodiac Hurricane 630 Mid IO is used as a shipboard boat for a variety of missions including search and rescue, law enforcement and force protection. The deep-V fibreglass hull and inflatable collar combined with self righting and jockey style seating; provides the seaworthiness, shock mitigation, stability and manoeuvrability required to operate reliably and effectively in a hostile maritime environment. The ruggedized hull and collar construction and highly responsive diesel engine/outdrive propulsion system allows the Hurricane 630 to be safely launched and recovered in high sea-states. Also available as SOLAS approved FRB model. See separate information in this catalogue.



ZH 630 IO

Length	6,70 m.
Width	2,59 m.
Number of persons	10 Person
Weight empty boat	1850 kg.
Payload	935 kg.
Engine, single inboard	225 HP / DP drive
Hull / Tube material	GRP/Hypalon
Type approval	EC – Cat. B

ZODIAC HURRICANE RIBS

The Zodiac Hurricane 662 OB LE is typically used by a one or two man crew for law enforcement, fisheries patrol and harbour security missions. The deep V aluminium hull and inflatable collar combined with the partially enclosed console provides the seaworthiness, crew protection, stability, and manoeuvrability required to operate reliably and effectively in a variety of maritime environments. The ruggedized hull and collar construction and highly responsive outboard motor propulsion system allows the Hurricane 662 to operate safely in heavy weather and alongside other craft during enforcement operations.



ZH 662 OB

Length	6,70 m.
Width	2,59 m.
Number of persons	15 Person
Weight empty boat	894 kg.
Payload	1892 kg.
Engine, single	200 HP
Hull / Tube material	GRP/Hypalon
Type approval	EC – Cat. B

The Zodiac Hurricane 733 IO is used as a shipboard boat for a variety of missions including search and rescue, law enforcement and force protection. The deep-V fibreglass hull and inflatable collar combined with self righting and jockey style seating; provides the seaworthiness, shock mitigation, stability and manoeuvrability required to operate reliably and effectively in a hostile maritime environment. The ruggedized hull and collar construction and highly responsive diesel engine/outdrive propulsion system allows the Hurricane 733 to be safely launched and recovered in high sea-states.



ZH 733 IO	
Length	7,24 m.
Width	2,74 m.
Number of persons	15 Person
Weight empty boat	2130 kg.
Payload	1557 kg.
Engine, single inboard	315 HP / DP drive
Hull / Tube material	GRP/Hypalon
Type approval	EC – Cat. B

ZODIAC HURRICANE RIBS

The Zodiac Hurricane 753 OB typically used as a shore based boat operating independently in search and rescue, aids to navigation maintenance, law enforcement missions (SAR), fisheries patrol and harbour security missions (LE) or to transport an eight person Commando team in ship to shore, ship to ship and shore to ship assault missions (CDO). The deep-V fibreglass hull and inflatable collar combined with self righting and jockey style seating; provides the seaworthiness, shock mitigation, stability and manoeuvrability required to operate reliably and effectively in a hostile maritime environment. The ruggedized hull and collar construction and highly responsive twin outboard motor propulsion system allows the Hurricane 753 to operate safely in heavy weather and breaking seas.



	ZH 753 OB SAR	ZH 753 OB LE	ZH 753 OB CDO
Length	8,03 m.	8,03 m.	8,03 m.
Width	2,74 m.	2,74 m.	2,74 m.
Number of persons	20 Person	20 Person	20 Person
Weight empty boat	1126 kg.	1126 kg.	1126 kg.
Payload	2727 kg.	2727 kg.	2727 kg.
Engine	400 HP	400 HP	400 HP
Hull / Tube material	GRP/Hypalon	GRP/Hypalon	GRP/Hypalon
Type approval	EC – Cat. B	EC – Cat. B	EC – Cat. B

ZODIAC HURRICANE RIBS

The Zodiac Hurricane 920 OB is typically shore based and is manned by a two to four person crew for search and rescue, aids to navigation maintenance, law enforcement, fisheries patrol and harbour security missions (CABIN) or to transport an eight to twelve person commando team in ship to shore, ship to ship and shore to ship assault missions (CDO). The deep-V welded aluminium hull and inflatable collar provides the seaworthiness, shock mitigation, stability and manoeuvrability required to operate reliably and effectively in harsh conditions. The ruggedized hull and collar construction and highly responsive twin outboard motor propulsion system allows the Hurricane 920 to operate safely in heavy weather and alongside other craft during enforcement operations.



	ZH 920 OB CABIN	ZH 920 OB CDO
Length	9,14 m.	9,14 m.
Width	3,18 m.	3,18 m.
Number of persons	20 /10 Person	22 /15 Person
Weight empty boat	2223 kg.	2074 kg.
Payload	2820 kg.	2969 kg.
Engine	600 HP	600 HP
Hull / Tube material	GRP/Hypalon	GRP/Hypalon
Type approval	EC – Cat. C/B	EC – Cat. C/B

ZODIAC HURRICANE RIBS

The Zodiac Hurricane 933 IO SAR is typically used as a shore based boat operating independently in search and rescue, aids to navigation maintenance and law enforcement missions. The Zodiac Hurricane 933 OB CDO is typically used by a two man crew to transport an eight to twelve person commando team in ship to shore, ship to ship and shore to ship assault missions. The deep-V fibreglass hull and inflatable collar combined with self righting and jockey style seating; provides the seaworthiness, shock mitigation, stability and manoeuvrability required to operate reliably and effectively in a hostile maritime environment. The ruggedized hull and collar construction and twin diesel propulsion system allows the Hurricane 933 to operate safely in heavy weather and high sea states.



	ZH 933 IO SAR	ZH 933 OB CDO
Length	9,37 m.	9,37 m.
Width	3,00 m.	2,90 m.
Number of persons	10 /6 Person	21 /15 Person
Weight empty boat	3560 kg.	2205 kg.
Payload	1414 kg.	2769 kg.
Engine	600 HP	600 HP
Hull / Tube material	GRP/Hypalon	GRP/Hypalon
Type approval	EC – Cat. C/B	EC – Cat. C/B

Custom Hurricanes:

We routinely develop custom solutions to meet a military's specific need. With sizes ranging from 20 to 45 feet (6 to 14 meters) in length and dozens of unique Hurricane components, we can customize boats to perfectly fit a mission profile. From consoles, storage, seats, bolsters, cabins, diver doors, Durarib™ collars, auto-inflation, radar frames, and every electronic suite on the market, Zodiac Hurricane®RIBs are tailored to your needs.

Order GRP or Aluminum hulls, inboard or outboard engines, stern, jet or surface-piercing drives, cabins, T-tops, or open deck space. Each component, carefully engineered and proven specifically for Hurricane models by our own highly skilled engineers.

The Zodiac Hurricane Technical Centre is based in Vancouver, Canada. It comprises two separate yet complementary teams, Research & Development and Production Engineering, both teams fully dedicated to Rigid Inflatable Boats design and construction. Their regular contact with customers throughout the world ensures that our products meet all customer expectations.

To ensure utmost quality throughout the production process, from design to delivery, Zodiac Hurricane has developed clear-cut procedures. The entire system is continuously adapted to ensure product quality and our customer satisfaction. ISO Certification, Solas Approval, Other Mandated Approvals, Certificates



Custom Hurricane

Length	TBA
Width	TBA
Number of persons	TBA
Weight empty boat	TBA
Payload	TBA
Engine, single inboard	TBA
Hull / Tube material	TBA
Type approval	TBA

Customer training:

For all organizations, governments or all other customers, Zodiac Milpro Training provides training without limits and on every type of equipment (not only Zodiac Milpro range). The Zodiac Milpro expert trainers, coming from Special Forces and military activities, are qualified for all type of trainings, with no field limits. From personal and team coaching to specific equipment use and special application drill, Zodiac Milpro is able to start or improve your skills. With a lot of renowned customers trusting us, Zodiac Milpro Training is the best way to maximize your efficiency whatever your objectives are.

From a few days to weeks, Zodiac Milpro training programs are adapted to customers' needs. Trainings can be performed at customer's place with his own equipment or at Zodiac Milpro facilities with Zodiac Milpro's equipment. Zodiac Milpro trainings are open to every equipment users and not reserved to Zodiac Milpro equipment's holders.

Maintenance trainings are designed to make customers operational in basic or advanced boat maintenance. Zodiac Milpro courses provide self-sufficient for boat repair and teach customers the right procedures ensuring the longest boat lifetime.

Zodiac Milpro special techniques trainings allow users to the most demanding operations, including commando and rescue requirement techniques.



Zodiac Hurricane military and professional boat models which are designed and built in Delta, British Columbia. Zodiac Hurricane has been building RIBs (rigid hull inflatable boats) in both aluminium and fibreglass since 1976. The manufacturing facility of Zodiac Hurricane is located in Delta, B.C. Canada and consists of 46,000 square feet situated on 2 acres of land approximately 100 yards from the Fraser River. Over 100 people are employed in the complete spectrum of activities ranging from Management, Accounting and Finance, Sales, Engineering, Production, Quality Control and Stores.

The factory maintains a Quality Assurance Program that is registered as conforming to ISO 9001:2000 (Cert.-0019697:800183). This ensures uniformity of design, materials and testing as well as traceability of components. This reflects the high standard to which Zodiac Hurricane boat models are manufactured. A copy of our ISO registration certificate is included in this submission.

Zodiac Hurricane RIBs are the finest craft of their type on the planet.

Mission Specific. The Zodiac Hurricane range of RIBs are mission specific vessels used by the most discriminating and knowledgeable operators on the seas. They demand the utmost in ruggedness and reliability, and Hurricane delivers.

Turnkey Hurricanes - We have developed several turnkey models based on historical contract definitions specified over the last 20 years. **Turnkey models are fully defined, competitively priced, and faster to order and deliver.** They can be specified with aluminium or fibreglass hulls, inboard or outboard engine, and propeller or jet drives – all with removable air collars for rapid and easy maintenance, accepting either standard air or DuraRIB™ foam collars. Models larger than the 560 have under-deck fuel tanks, and models larger than the 630 can be equipped with dive doors.

Commando Turnkeys: Designed for use by 2-man or larger crews, with hull design and seating arrangements to mitigate shock, maximize seaworthiness, and minimize radar signature for operating in hostile areas. 630 IO, 733 IO, 753 OB, 920 OB, 933 OB.
(IO is Inboard engine versions, OB is outboard engine versions)

Search and Rescue Turnkeys: Designed to work independently, with jockey seats and self-righting capabilities. 753 OB, 933 IO.

Law Enforcement Turnkeys: Designed for one, two, or small crew with stand-up center consoles and T-tops. 662 OB, 753 OB.

Cabin Turnkeys: Designed to carry 2 to 6 crew in comfort, safe in heavy weather, fully enclosed, heated cabin. 920 OB, 1110 IO.

Custom Hurricanes: We routinely develop custom solutions to meet a military's specific need. With sizes ranging from 20 to 45 feet (6 to 14 meters) in length and dozens of unique Hurricane components, we can customize boats to perfectly fit a mission profile. From consoles, storage, seats, bolsters, cabins, diver doors, DuraRIB™ collars, auto-inflation, radar frames, and every electronic suite on the market.

Zodiac Hurricane Ribs are tailored to your needs.

- GRP or Aluminium hulls
- Inboard or outboard engines
- Stern, jet or surface-piercing drives,
- Cabins, T-tops, or open deck space.
- Each component, carefully engineered and proven specifically for Hurricane models by internal and highly skilled engineers.



Services may be the crucial and vital difference, especially when it comes to maritime safety equipment. At our workshops we do repair and inspections of your equipment. All service is performed by trained at certified personnel. We are certified to do service for all our products and for many other brands on the market. Our workshops are specialized in inflatable equipment and fibreglass repairs.

We offer a professional service of

- Inflatable boats
- Rigid inflatable boats / RIB's
- Inflatable lifejackets
- Immersion suits
- Liferafts (ZODIAC, DSB and RFD)
- Marine evacuation systems (Marine Escape System)
- GRP repairs

At Uni-Safe we prioritize security high, and therefore place much emphasis on the service dates on the equipment. We highly recommend that all inspections and repairs are carried out with caution and in controlled and approved conditions.

Service workshops are selected and qualified by our subcontractors and approved and certified by DMA. All maintenance work carried out in accordance with applicable laws for environmental and working conditions.

Servicecenter Frederikshavn has 1200 m2 and a large part of the premises used to serve particular Zodiac liferaft and marine evacuation systems. We have space and capacity to service the world's largest liferaft, the Zodiac 150 person versions.

Uni-Safe Servicecenter is specialized in servicing of inflatable equipment and as a corollary of the later years of very positive sales of Zodiac rafts to Danish companies, has built up a team of service professionals who regularly service the ships when calling at ports.

We offer a complete service setup nationwide from crane ordering, installation, service and journaling and service call. In this way the owner/ship is completely free from these functions. Service work includes liferaft as well as MES systems, lifejackets, immersion suits etc.

Please feel free to call us for service of your equipment.

Our service is your safety!
Uni-Safe Serviceteam



GODKENDELSE AF SERVICEATION

UDGÅRST
Dokument

Godkendelsesnummer: 200910471

Udstedt i overensstemmelse med artikel 12, stk. 1, i lov nr. 145 af 2007

En kopi af Udgårets 1. og 2. underskriftsforlæg er fremsendt til Kongeriget Danmark.

AF UDRETSLEDEREN

Stats- og godkendelsesmyndigheden

UN-GARF SERVICECENTER	
Adresse	Ungdomsvej 1, 1 2000 Frederiksberg
Udvalgte nr.	4012 02 12
Telefon nr.	4012 12 12
Telefax nr.	4012 12 12
E-mail	udvalgte@un-garf.dk
Web adresse	www.un-garf.dk

Noter til udfyldelse af godkendelsesblanket 2007-2009
 Den serviceation, der optages i denne ansøgning, skal i overensstemmelse med Lov nr. 145 af 2007 om Udgårets indhold og form, indsendes i tre eksemplarer af den serviceation, der skal godkendes.

REMARKS TO BE FULFILLED BY THE APPLICANT
 Indsæt her i den serviceation, der indsendes til stats- og godkendelsesmyndigheden, en kopi af Udgårets indhold og form, indsendt til Kongeriget Danmark, i henhold til artikel 12, stk. 1, i lov nr. 145 af 2007.

Kortene til godkendelse af Udgårets 1. og 2. underskriftsforlæg indsendes, senest, d. 1. april, til stats- og godkendelsesmyndigheden, og skal være godkendt i overensstemmelse med artikel 12, stk. 1, i lov nr. 145 af 2007.

UDGÅRST
Dokument

AUTHORIZATION

to perform:

2. Contributions of GRP services
Authorization is only valid for the same GRP
Authorization no. 200910471

Issued by agreement of the Danish Act on the Safety at Sea, Section 23, as amended

On behalf of the Ministry of Economy and Business Affairs for the Kingdom of Denmark

BY THE DEPUTY MINISTER, AUTHORITY

Noter til udfyldelse af godkendelsesblanket 2007-2009
 Den serviceation, der optages i denne ansøgning, skal i overensstemmelse med Lov nr. 145 af 2007 om Udgårets indhold og form, indsendes i tre eksemplarer af den serviceation, der skal godkendes.

REMARKS TO BE FULFILLED BY THE APPLICANT
 Indsæt her i den serviceation, der indsendes til stats- og godkendelsesmyndigheden, en kopi af Udgårets indhold og form, indsendt til Kongeriget Danmark, i henhold til artikel 12, stk. 1, i lov nr. 145 af 2007.

Kortene til godkendelse af Udgårets 1. og 2. underskriftsforlæg indsendes, senest, d. 1. april, til stats- og godkendelsesmyndigheden, og skal være godkendt i overensstemmelse med artikel 12, stk. 1, i lov nr. 145 af 2007.

Name of authorized person(s)

UN-GARF AIS Servicecenter (Frederiksberg)	
Adresse	Ungdomsvej 1, 1 2000 Frederiksberg
Udvalgte nr.	4012 02 12
Telefon nr.	4012 12 12
Telefax nr.	4012 12 12
E-mail	udvalgte@un-garf.dk
Website	www.un-garf.dk

Noter til udfyldelse af godkendelsesblanket 2007-2009
 Den serviceation, der optages i denne ansøgning, skal i overensstemmelse med Lov nr. 145 af 2007 om Udgårets indhold og form, indsendes i tre eksemplarer af den serviceation, der skal godkendes.

REMARKS TO BE FULFILLED BY THE APPLICANT
 Indsæt her i den serviceation, der indsendes til stats- og godkendelsesmyndigheden, en kopi af Udgårets indhold og form, indsendt til Kongeriget Danmark, i henhold til artikel 12, stk. 1, i lov nr. 145 af 2007.

Kortene til godkendelse af Udgårets 1. og 2. underskriftsforlæg indsendes, senest, d. 1. april, til stats- og godkendelsesmyndigheden, og skal være godkendt i overensstemmelse med artikel 12, stk. 1, i lov nr. 145 af 2007.

Name of authorized person(s)

Adresse	Ungdomsvej 1, 1 2000 Frederiksberg
Udvalgte nr.	4012 02 12
Telefon nr.	4012 12 12
Telefax nr.	4012 12 12
E-mail	udvalgte@un-garf.dk
Website	www.un-garf.dk

Noter til udfyldelse af godkendelsesblanket 2007-2009
 Den serviceation, der optages i denne ansøgning, skal i overensstemmelse med Lov nr. 145 af 2007 om Udgårets indhold og form, indsendes i tre eksemplarer af den serviceation, der skal godkendes.

REMARKS TO BE FULFILLED BY THE APPLICANT
 Indsæt her i den serviceation, der indsendes til stats- og godkendelsesmyndigheden, en kopi af Udgårets indhold og form, indsendt til Kongeriget Danmark, i henhold til artikel 12, stk. 1, i lov nr. 145 af 2007.

Kortene til godkendelse af Udgårets 1. og 2. underskriftsforlæg indsendes, senest, d. 1. april, til stats- og godkendelsesmyndigheden, og skal være godkendt i overensstemmelse med artikel 12, stk. 1, i lov nr. 145 af 2007.

Name of authorized person(s)

Adresse	Ungdomsvej 1, 1 2000 Frederiksberg
Udvalgte nr.	4012 02 12
Telefon nr.	4012 12 12
Telefax nr.	4012 12 12
E-mail	udvalgte@un-garf.dk
Website	www.un-garf.dk

Noter til udfyldelse af godkendelsesblanket 2007-2009
 Den serviceation, der optages i denne ansøgning, skal i overensstemmelse med Lov nr. 145 af 2007 om Udgårets indhold og form, indsendes i tre eksemplarer af den serviceation, der skal godkendes.

REMARKS TO BE FULFILLED BY THE APPLICANT
 Indsæt her i den serviceation, der indsendes til stats- og godkendelsesmyndigheden, en kopi af Udgårets indhold og form, indsendt til Kongeriget Danmark, i henhold til artikel 12, stk. 1, i lov nr. 145 af 2007.

Kortene til godkendelse af Udgårets 1. og 2. underskriftsforlæg indsendes, senest, d. 1. april, til stats- og godkendelsesmyndigheden, og skal være godkendt i overensstemmelse med artikel 12, stk. 1, i lov nr. 145 af 2007.

Name of authorized person(s)

Adresse	Ungdomsvej 1, 1 2000 Frederiksberg
Udvalgte nr.	4012 02 12
Telefon nr.	4012 12 12
Telefax nr.	4012 12 12
E-mail	udvalgte@un-garf.dk
Website	www.un-garf.dk

Noter til udfyldelse af godkendelsesblanket 2007-2009
 Den serviceation, der optages i denne ansøgning, skal i overensstemmelse med Lov nr. 145 af 2007 om Udgårets indhold og form, indsendes i tre eksemplarer af den serviceation, der skal godkendes.

REMARKS TO BE FULFILLED BY THE APPLICANT
 Indsæt her i den serviceation, der indsendes til stats- og godkendelsesmyndigheden, en kopi af Udgårets indhold og form, indsendt til Kongeriget Danmark, i henhold til artikel 12, stk. 1, i lov nr. 145 af 2007.

Kortene til godkendelse af Udgårets 1. og 2. underskriftsforlæg indsendes, senest, d. 1. april, til stats- og godkendelsesmyndigheden, og skal være godkendt i overensstemmelse med artikel 12, stk. 1, i lov nr. 145 af 2007.

Name of authorized person(s)

Adresse	Ungdomsvej 1, 1 2000 Frederiksberg
Udvalgte nr.	4012 02 12
Telefon nr.	4012 12 12
Telefax nr.	4012 12 12
E-mail	udvalgte@un-garf.dk
Website	www.un-garf.dk

Noter til udfyldelse af godkendelsesblanket 2007-2009
 Den serviceation, der optages i denne ansøgning, skal i overensstemmelse med Lov nr. 145 af 2



The importance of servicing

SECUMAR-servicing teams investigated: A quarter of all lifejackets defective!

The servicing department of the life jacket manufacturer SECUMAR has produced some alarming findings. Of the lifejackets sent in to the company annually by their owners, approximately one quarter show signs of defects, some of which are serious. Most of the lifejackets are in such a bad condition that they would not help in an emergency.

Most of the problems were discovered with the carbon dioxide cartridges, the gas from which is used to inflate the buoyancy chambers. The cartridges were either pierced and empty, or some of them were missing completely. In emergency situations that would have meant: the automatic inflator would not have functioned, the safety factor in cases of unconsciousness would not have existed. The wearer would have had to inflate his life jacket with difficulty using the oral valve - an almost impossible task after capsizing in a storm.

Further sources of defects which were discovered by the SECUMAR servicing teams were corroded cartridges and, in seldom cases, missing protective caps or leaking buoyancy chambers.

Furthermore, it was determined that the majority of the life jacket owners had not kept to the prescribed servicing intervals. The date concerned can be seen on the service sticker; the principle is the same as the MOT-system for car testing. In 20 percent of cases of lifejackets sent in to SECUMAR, the servicing interval had been exceeded. In some cases, a year had even elapsed between the prescribed date and the actual date of submitting the life jacket.

The problem becomes even more vivid when one considers the hidden number of lifejackets not submitted or never submitted for servicing, a similar percentage of which (when compared to the percentage uncovered by servicing statistics) are surely also non-operational.

For these reasons UNI-SAFE is appealing urgently to the owners of lifejackets to take note of and keep to the servicing intervals marked on their service stickers.

Source: SECUMAR, Benhardt Apparatebau GmbH

Taking your car for its routine servicing goes without saying. Servicing a life jacket is the same. A major service is due at least every two years and annually for SOLAS lifejackets.

Checklist / Lifejacket service

- ❑ 16 hours airtightness test of the buoyancy chambers
- ❑ test of the automatic inflator using test platelets and pill
- ❑ manual test of the manual inflator using test platelets
- ❑ renewal of the pill in the automatic inflator
- ❑ renewal of the gaskets
- ❑ functional check of the oral valve
- ❑ function check of the over-pressure valve on SOLAS life jackets
- ❑ check of the seams and the buckles
- ❑ check of the CO2 cartridge
- ❑ assembly of the lifejacket after inspection
- ❑ renewal of service sticker and packaging
- ❑ documentation and final check



Within the framework of a service repairs are carried out, and, if requested, new component parts such as life jacket lights, spray hoods, or a neck fleece may be retro-fitted. After the re-assembly process, the successful service is documented by a service sticker.

[illegible]



Regular inspection and maintenance prolongs survival suit life.

IMO circular MSC / Circ. 1114 from 2004 recommend that immersion suit inspection be carried out by the manufacturer at least every 3 years. It is assumed that the owner carries out inspection of immersion suits in accordance with MSC / Circ. 1047.

If the suits are vacuum packed, it is recommended inspection every 5 year.

At our authorized service stations, we have personnel with expertise and equipment to perform the necessary control of the survival suits. Service will reveal any deterioration of materials, and damage that is not detected on board. Be sure that the service station you use for the service of Suits has a valid certificate of Authorisation and includes a "service certificate" with date of next service when a service has been performed on your suits.

A Helly Hansen Service Release Certificate form. The form is titled 'HELLY HANSEN Certificate' and 'SERVICE RELEASE CERTIFICATE'. It contains a section for 'The below identified immersion suit is inspected and released to safe service under the authorization of Helly Hansen AS'. Below this, there is a section for 'Suit no.' and a section for 'Released by' with a signature line. At the bottom, there is a Helly Hansen logo and the text 'HELLY HANSEN AS 70 2100 BULVARD, NORWAY, TEL: +47 66 07 00 00'.

Uni-Safe Servicecenter is servicepartner for most wellknown inflatables and RIBs.



On site repair of Hurricane RIB.



Zodiac MinuteMan with rescuezone.
Inflated in 60 seconds by compressed airbottle.

Uni-Safe Servicecenter modify and build up boats to meet the specific needs for the single customer. We do construction drawings, blacksmith- and paint jobs, engine installations, engine- and jet drive service and adjustments.



Hurricane FRB for commercial- and governmental purposes.



7 meter Uni-Safe boarding boat for the navy.



Zodiac Hurricane's in our Workshop



Final inspection and system check.
Always part of our service- and deliveries of new boats



Sea trial with customers always recommended to secure the best impression of our work and the handling of the boats.

UNI-SAFE SERVICECENTER

Frederikshavn/Denmark

Perspektivvej 11
9900 Frederikshavn

Tel. +45 9843 1353
raftservice@unisafe.dk

København/Denmark

Amager Strandvej 124
2300 Copenhagen S

Tel. +45 3286 0537
service@unisafe.dk



Uni-Safe A/S
Amager Strandvej 124
DK-2300 København S
Telefon +45 3258 1615
Telefax +45 3258 1330
info@unisafe.dk



Uni-Safe Servicecenter
Perspektivvej 11
DK-9900 Frederikshavn
Telefon +45 9843 1353
Telefax +45 9843 1453
service@unisafe.dk



Uni-Safe Rettungsgeräte GmbH
ABC-Strasse 16
DE-22880 Wedel
Telefon +49 4631 6012
Telefax +49 4631 6011
milpro@unisafe.org

www.unisafe.dk